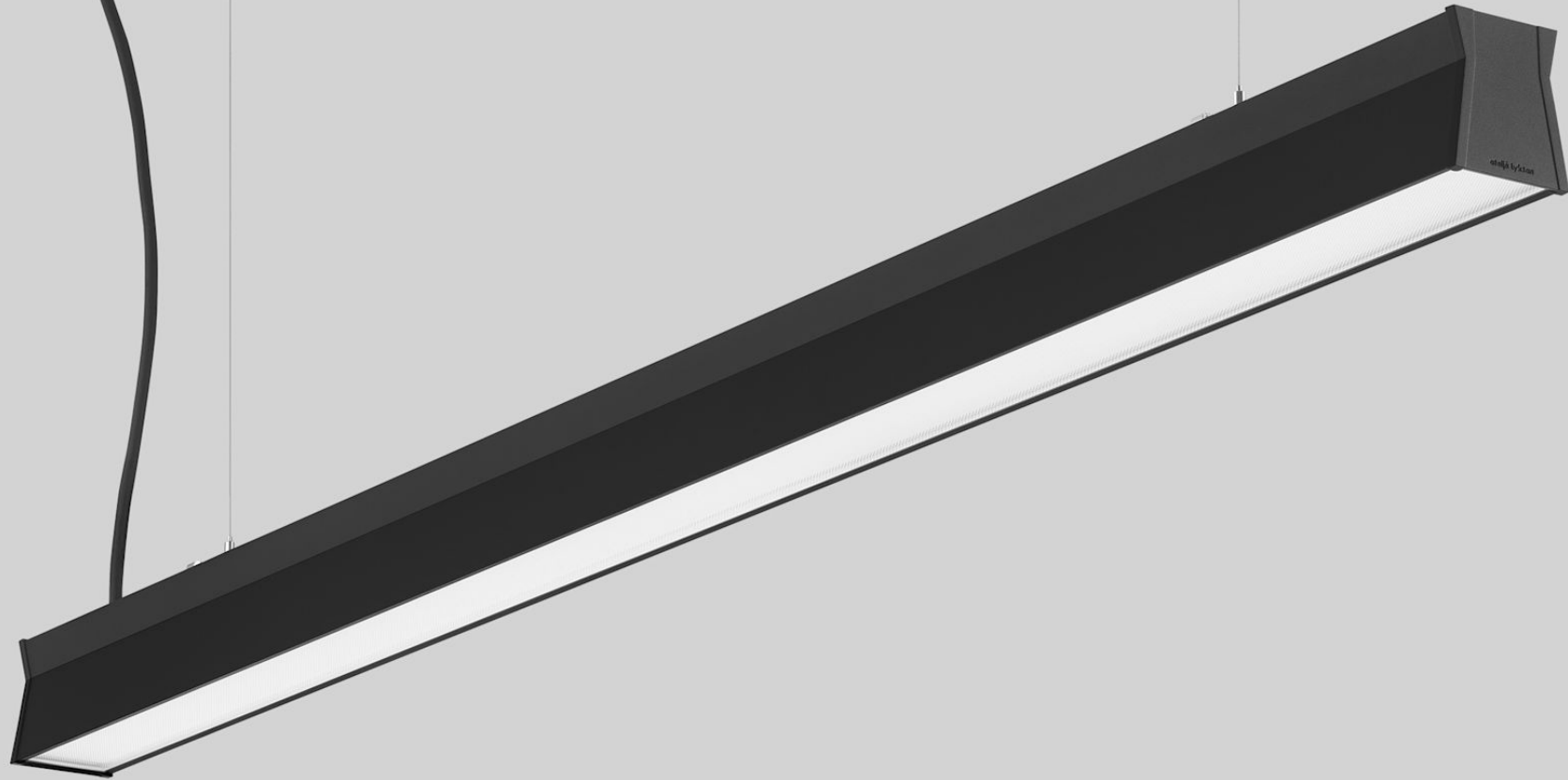


ateljé Lyktan



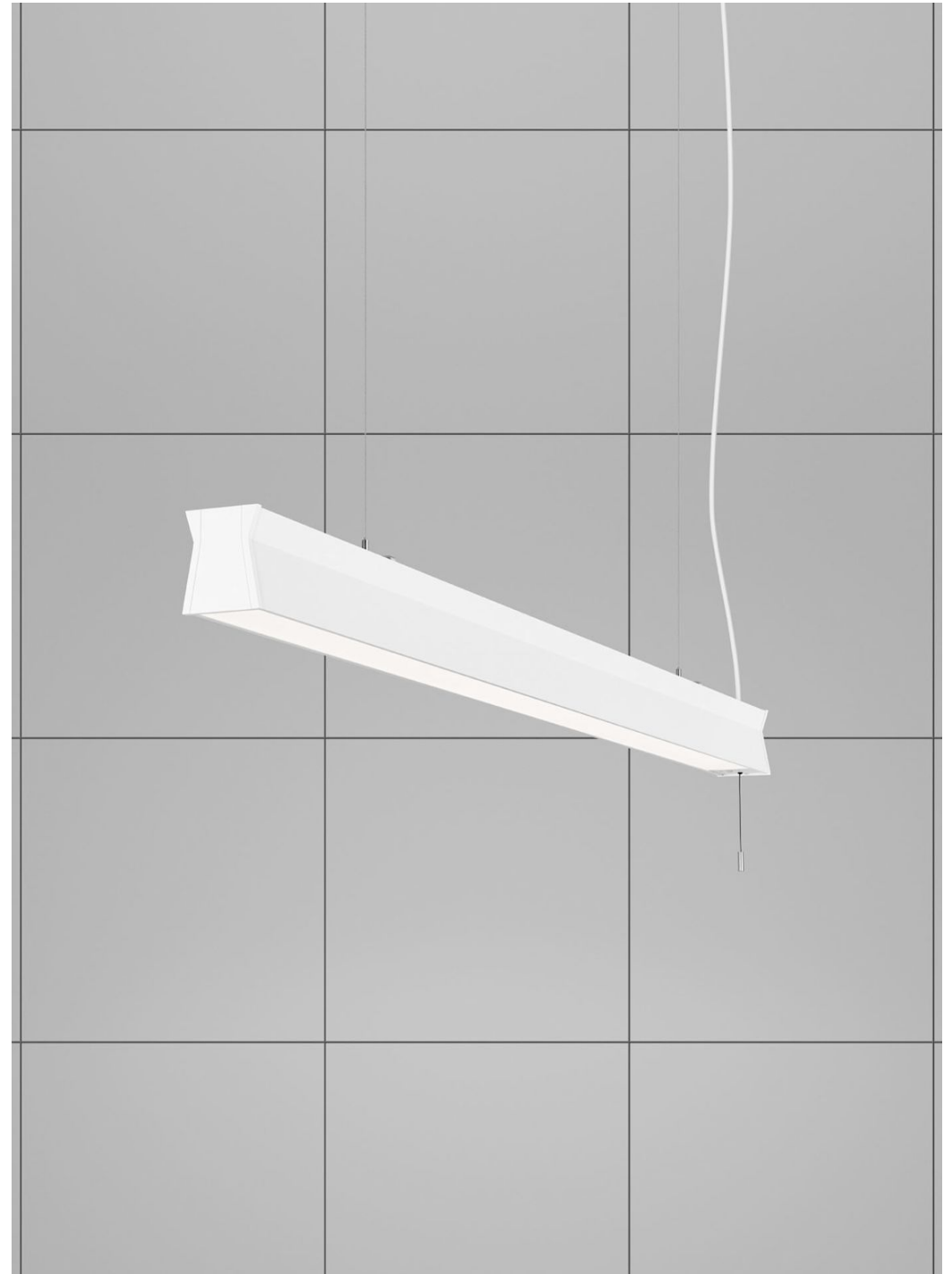
TIME

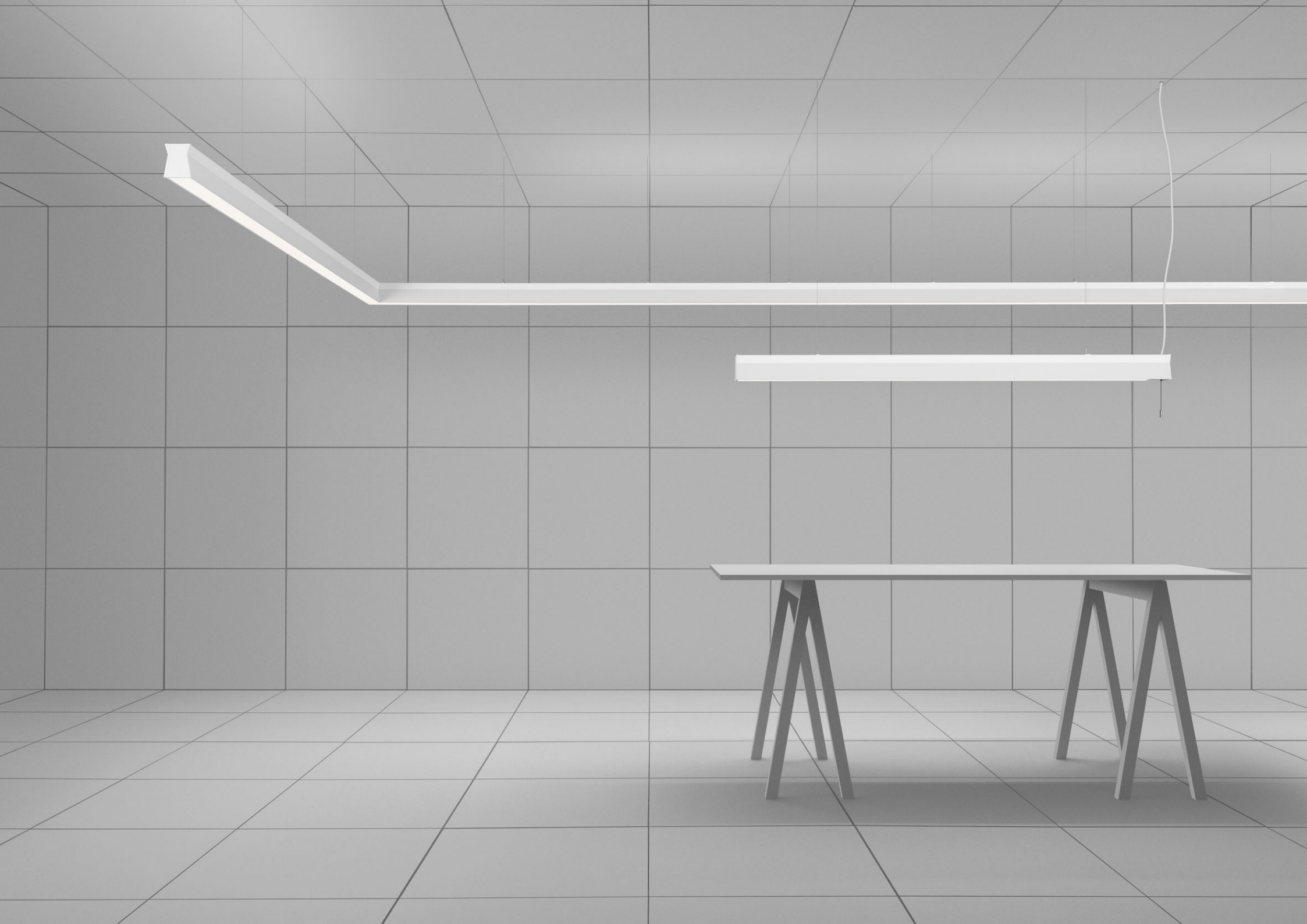
Design by Bengt Källgren

Twenty years in the making.

Time has been shaping workplaces for more than two decades. In its fourth generation, the series offers greater flexibility, enhanced visual comfort and a smarter system approach, all within the same timeless design.

Built to perform. Designed to endure.







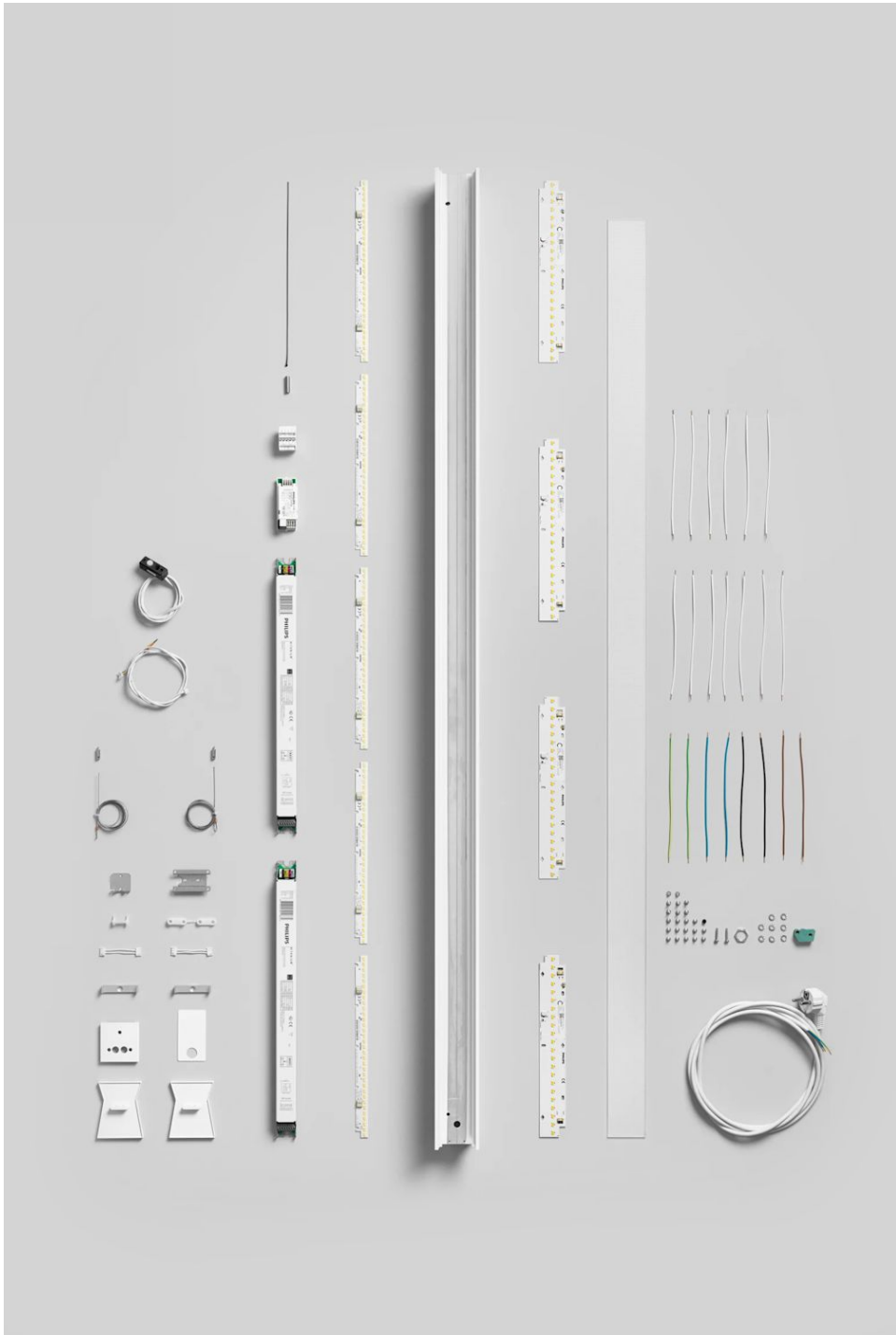
● **Black**
RAL 9005



○ **White**
RAL 9010/RAL 9006

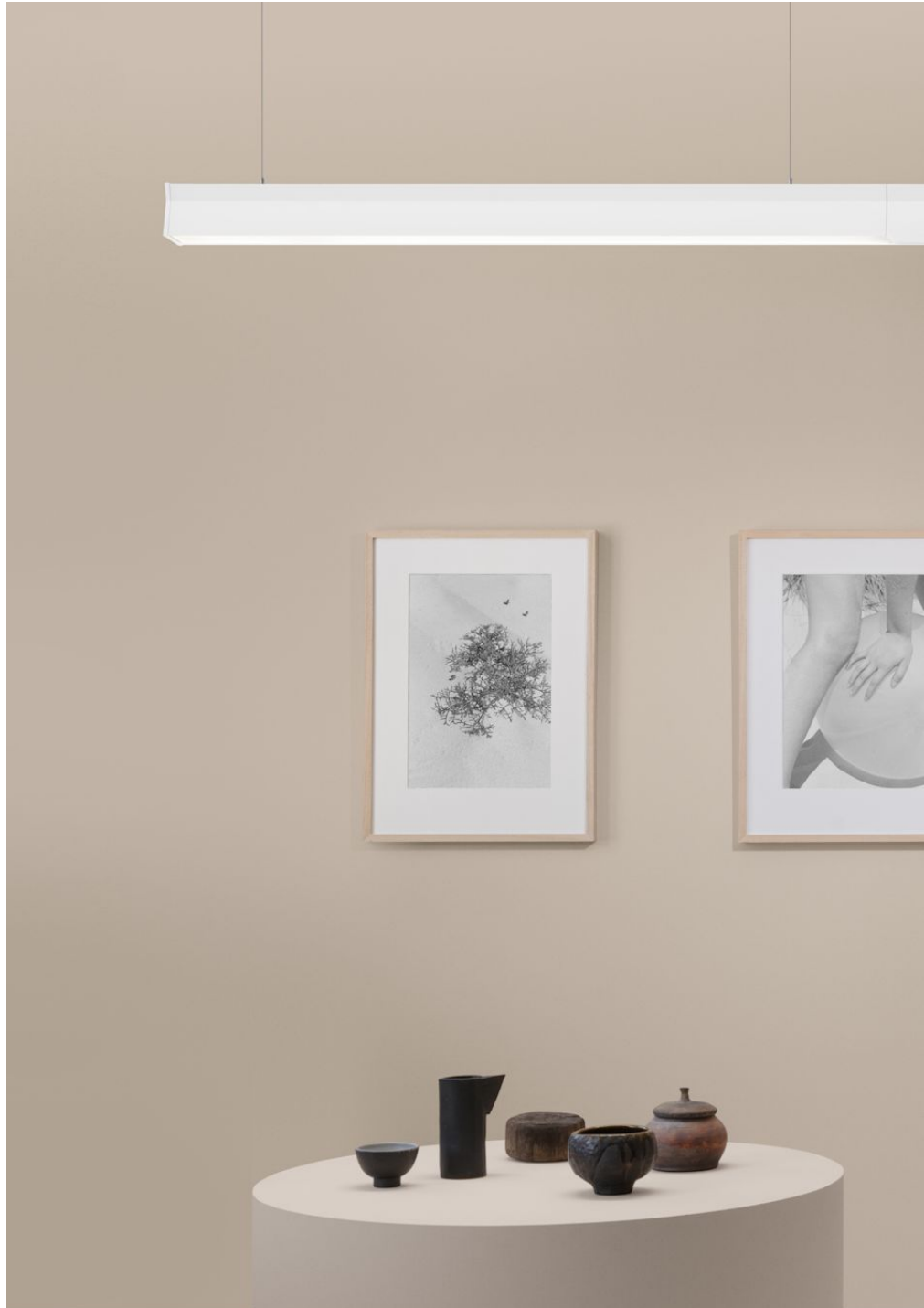


● **Beige**
RAL 1019



Technical specifications

Material	Frame in extruded 75% Post-consumer recycled aluminium, meaning consumer waste. 100% Post-consumer aluminium available on request in bigger quantities. End caps in die-casted zinc. Microprismatic diffuser in PMMA, Microlamella in recycled PP. Honeycomblouvre in PC.
Installation	Suspended in 1.5 m wire with wire lock. The suspension system is adjustable both vertically and diagonally. System: First luminaire is supplied with end caps. Internal mechanical connection between start and system luminaires. Internal mechanical connection between system luminaire and end cap for a clean finish free from visible screws.
Connection	Supplied with 3, 4 or 5 m cable available in three colours, white, black and beige. Single luminaires are supplied with halogen-free cable 3G0.75 mm ² , or 5G0.75 mm ² (dim). System start is supplied with halogen-free cable 3G1.5 mm ² , or 5G1.5 mm ² (dim) available in black and white. Optional connection such as Wago, Ensto, Schucko connector or track adapter is available for selection in configurator. System luminaires are supplied excluding cable, with quick connector for electrical connection between system luminaires or system start luminaire.
Light source	Including LED light source. Colour temperature 3000K or 4000K. Colour rendering CRI 80-90. Lifespan: L100 100 000hrs. Tunable white 2700-5700K
Light scattering	Available light distributions (Direct light/Indirect light); 100/0, 70/30, 50/50, 30/70, 20/80). Available distributions depends on your choice of diffuser.
Driver	Equipped with DALI 2 driver/drivers that regulates the light with amplitude modulation creating a flicker-free light. (Short-term flicker severity; PstLM \leq 1.0, Stroboscopic Visibility Measure; SVM \leq 0.4). Dimming 1-100%. The luminaire is delivered as standard with pre-programmed Constant Lumen Output (CLO). The LED driver is designed for a lifetime of 100 000h and with a failure probability of less than 10 %. It is possible to get a 'smart' driver that collects data regarding energy consumption and performance if you choose the intelligent lighting control solution Organic Response. Choice in configurator.
Energy classification	This product contains a light source with energy efficiency class C or D Light source with CRI and CT 830/840/940 - Class C Light source with CRI and CT 930 - Class D
Time Track	Time track is a luminaire equipped with a Global Trac Pulse track connected on one phase. Available in two sizes (1130 & 2250) as both start and system with 94cm and 2m track sections for mounting of luminaires with track adapter. Controlled through DALI, which enables individual control of track mounted luminaires with DALI drivers. Please consider the balance of the system if larger track mounted spotlight are fitted.
EPD	The EPD gets you a clear picture of the luminaire's total environmental impact. EPD will soon be published for this new generation of Time.
Control	All versions of the Time Pendant are available with DALI-2 control. Some versions are also available with a single DALI-2 driver to reduce the number of DALI addresses. Please note that this limits the available light distribution options. Other control options available as standard - DALI indirect light, PullDim direct light - ON/OFF connection for indirect light, PullDim direct light - Double PullDim, with separate control for indirect and direct light - Organic Response (3-core connection) - Organic Response Master (5-core connection) - DALI indirect light, PIR sensor + PullDim direct light Control options available as customization (limited right to return and longer lead times may occur) - PIR sensor + 1 PullDim - PIR sensor + 2 PullDim for separate control of indirect and direct light - DALI + DALI programmable PullDim For detailed information about the specific control options, please explore document Controls available under Downloads.
Diffuser	Time is available with seven different diffuser options designed to meet the specific requirements of unique projects. SEAMLESS - For long continuous light lines built in a system we recommend the Seamless diffuser. This diffuser creates seamless light lines. Please note that minor shadows may occur at the joint between two system luminaires due to the increased distance between the LED within the fixture. The Seamless diffuser is purchased as an accessory on a



ateljé Lyktan

Head Office

Fyrvaktaregatan 7, SE-296 81 Åhus, Sweden

Tel: +46 (0)44 28 98 10

E-mail: info@ateljelyktan.se

www.ateljelyktan.se